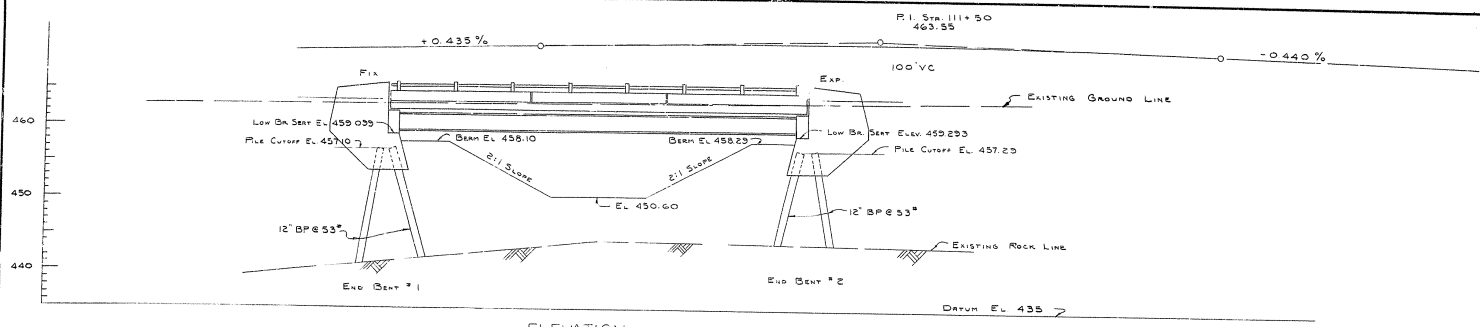
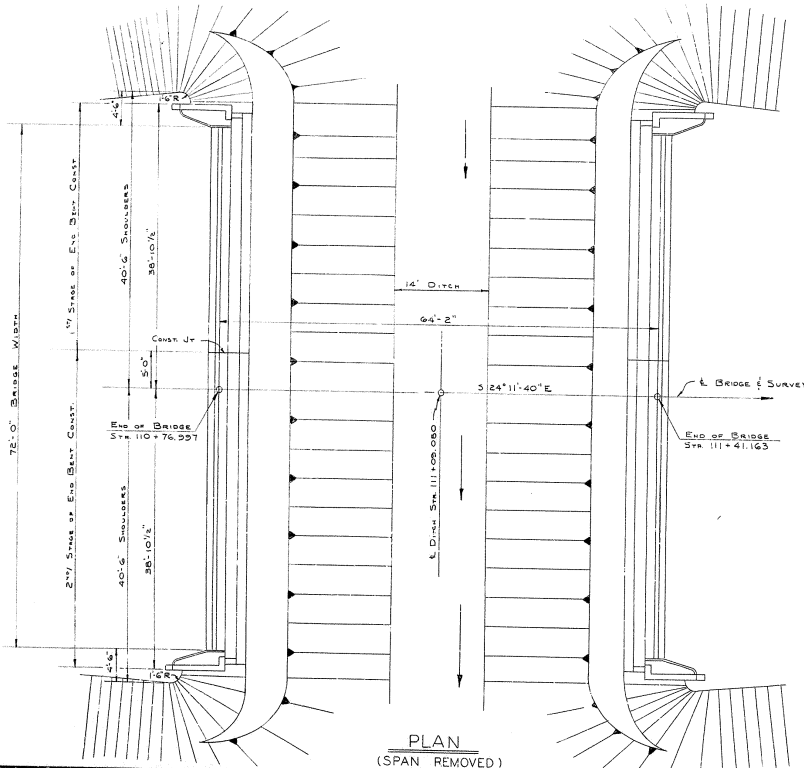


NO.	DATE	BY	FOR	REVISION
7	KY.			

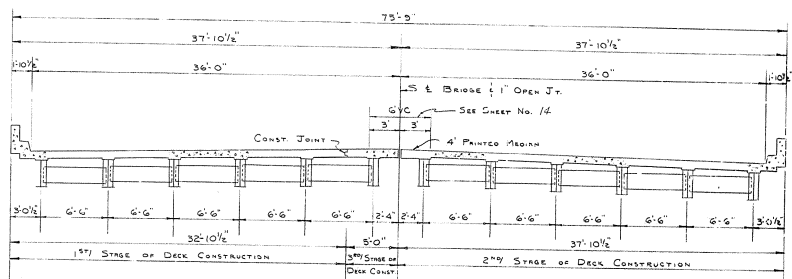


ELEVATION

ONE 63'-0" SIMPLE WIDE FLANGE STEEL BEAM SPAN (CONCR.)
 12" SAFETY CURBS, 72'-0" ROADWAY, 2:1 FILL SLOPES
 8'-0" SHOULDERS, H 20-S16-44 LOADING

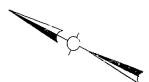


PLAN
(SPAN REMOVED)



TYPICAL SECTION

(SHOWING INTERM. DIAPHRAGMS) (SHOWING END DIAPHRAGMS)



LAYOUT

DESIGNED BY	DATE
CHECKED BY	DATE
APPROVED BY	DATE
REVISION	

BRIDGE OVER FERN VALLEY DITCH SHEET 2

COMMONWEALTH OF KENTUCKY
 DEPARTMENT OF HIGHWAYS
 FRANKFORT
 COUNTY OF JEFFERSON
 PRESTON STREET
 ROAD

STATION	111+09.080	PROJECT NO.	
BRIDGE NUMBER		DRAWING NO.	16040
		DATE	

GENERAL NOTE

NO. SHEET	DATE	REV. NO.	REV. DATE	BY	CHECK
7	KY.				

SPECIFICATIONS: Kentucky Department of Highways, current Standard with Amendments.

DESIGN LOAD: Bridge designed for H20-S16A loading as specified in the 1961 A.A.S.H.O. Specifications.

DESIGN STRESSES:

For reinforced concrete:

$f_c = 20,000$ p.s.i.	$f_s = 1,200$ p.s.i.
$f_t = 3,000$ p.s.i.	$u = 200$ p.s.i. for abutment
$v = 300$ p.s.i. for ΣO	$n = 10$

For structural steel:

$f_y = 20,000$ p.s.i.

FOUNDATION PRESSURE: Piles are designed for a maximum load of 40 tons per pile for Group I loading with increases allowed for other loading groups.

CONCRETE: Class "A" Concrete is to be used throughout.

REINFORCEMENT: Intermediate or hard grade reinforcement shall be used in accordance with A.S.T.M. A15-50T for billet steel, or A16-50T for rail steel conforming to bending requirements of AASHTO Spec. M52. Dimensions shown from face of concrete to bars are clear distances. Spacing of bars is from center to center of bars.

BEVELED EDGES: All exposed concrete edges shall be beveled 7/8" unless otherwise shown.

PREMOULDED CURB EXP. JT. MATERIAL, POLYVINYL WATERSTOP, JOINT SEALING COMPOUND AND PREFORMED SEAL: The cost of these items is to be included in the unit price bid for Class "A" Concrete.

PLACING FILLS: Embankment shall be placed in compacted layers to bottom of bent cup elevation before driving piles in end bent 1 and 2. Embankment shall be placed simultaneously in front and back of end bents in compacted layers and the 5 ft. minimum berm provided as shown on the plans.

BEARING AREAS: Bearing areas to receive superstructure shall be finished smooth and level at the elevations shown on the plans before placing the girders for the span.

ANCHOR BOLT HOLES: The Contractor shall exercise care in placing reinforcing steel in top of substructure units to the dimensions shown so as to miss anchor bolt holes.

ANCHOR BOLTS: The cost of lead required to set anchor bolts and the cost of drilling anchor bolt holes shall be included in the "Lump Sum Bid" for structural steel. The Contractor shall be responsible for keeping holes dry in freezing weather. At the time of setting anchor bolts are to be heated to a blue heat to assure free flow of lead to bottom of hole.

CONSTRUCTION JOINTS: Construction Joints shall be made at locations shown on plans. Provide substantial keys at all construction joints.

PROTECTIVE COATING: Protective Coating shall be furnished and placed in accordance with the "Special Provision for Linseed Oil Protective Coating".

BILL OF INCIDENTAL MATERIAL: Quantities shown in Bill of Incidental Materials are approximate only, and the Contractor is responsible for furnishing enough material to complete the work in accordance with the Plans and Specifications.

TEMPORARY SUPPORTS: Temporary Supports or shoring will not be permitted under steel girders when pouring the concrete floor slab or when taking top of steel elevations.

PILING: Piling shall be driven to refusal or to solid rock. Test piles shall be driven where designated on the plans to determine the length required. All test piles shall be accurately located so that they may be used in the finished structure.

PAINT: All structural steel shall be given one shop coat of type I red lead paint and two field coats of aluminum paint in accordance with the specifications. Shop paint shall not be applied within 3" of open holes where high strength bolts are to be used for field connections and shall not be applied to steel in contact with concrete.

REMOVING EXISTING STRUCTURES: This contract includes removal of existing concrete bridge and R.C. Culvert in accordance with the plans and specifications. The existing bridge is not to be removed until the initial stage of the new work is completed and open to traffic. The cost of all work, labor, equipment and incidentals shall be included in the "Lump Sum Bid" for removing the two existing structures.

MATERIALS: A.S.T.M. Specifications herein after designated shall govern materials furnished:

Structural Steel	A36-62T
High Strength Bolts, Nuts, Washers	A325-61T
Stud Shear Connectors	A108-C1015
Molten Lead & Lead Plates	B29-55

CONNECTIONS: Unless otherwise provided, shop and field connections shall be 7/8" high strength bolts. Open holes shall be 15/16" diameter.

STRUCTURAL STEEL: "Lump Sum Bid" for structural steel shall be full payment for all structural steel, bolts, washers, steel pins, lead plates, molten lead, welding and welding materials, paint, linen tracings of shop and erection drawings, and all tools, labor and materials necessary to erect the structural steel in accordance with the plans and specifications.

MILL TEST REPORTS: Notarized mill test reports in triplicate shall be furnished the Kentucky Department of Highways showing that all materials furnished conform to the specifications.

STEEL FINISH: See table on sheet No. 17

DIMENSIONS: Dimensions are for a normal temperature of 60° Fahrenheit.

CHANGES IN STRUCTURAL STEEL QUANTITIES: In the event that changes in steel quantities are required due to changes by the Engineer in the plans, additional payments therefor shall be made at a unit price which will be equal to the contract Lump Sum price divided by the estimated total weight.

WELDING SPECIFICATIONS: Welding, welders, welding materials and welding procedures shall comply with American Welding Society Specifications for welded Highway and Railway Bridges, 1963 Edition with paragraph modifications and additions shown on Standard Drawing AWS-1.

SHOP ASSEMBLY: Connections for diaphragms may be punched or drilled full size without assembly.

PLATES: Plates in shoes must be true and free of warp.

OPTIONAL TYPES OF SHEAR CONNECTORS: The Contractor shall use one of the following types throughout:
Option "1" - 1" channel #5.68 / Option "2" - 3/8"x1" studs / Option "3" - 3/4"x3/4" mean diam. bar spiral

SHEAR CONNECTORS: "Lump Sum Bid" for shear connectors shall be full payment for all shear connectors, welding and welding materials, patent royalties, and all labor and materials necessary to field weld or shop weld shear connectors in place, in accordance with the plans and specifications. Connectors shall be welded with approved welding equipment.

HIGH STRENGTH BOLTS: Connections using high strength bolts shall be in accordance with section 5.2.3-A-5(1) of the specifications. Assembly and dimensions of high strength steel bolts, nuts and washers shall conform to "Specifications for Structural Joints using A.S.T.M. A325 Bolts" March 1960, approved by the "Research Council on Riveted and Bolted Structural Joints" of the Engineering Foundation. All joints are designed as friction type connections. Installation shall be performed by the turn of nut method.

SHOP PLANS: The Contractor shall submit shop detail plans in accordance with the Specifications.

FIELD WELDING: Where field welding is indicated, welding shall be performed in accordance with the specifications for welding materials and welding. Welding procedures shall be submitted by the contractor to the Department of Highways for approval.

TRAFFIC DETOUR: When initial stage of construction is complete and ready for traffic, the Contractor shall be responsible for furnishing adequate barricades and other safeguards according to the Specifications and as directed by the Engineer. The cost of this work is to be included in the Lump sum bid for removing existing structure.

APPROVED BY: *George H. ...*
 CHECKED BY: *...*
 DESIGNED BY: *...*
 DRAWN BY: *...*
 DATE: *...*

BRIDGE OVER FERN VALLEY DITCH SHEET 3

COMMONWEALTH OF KENTUCKY

DEPARTMENT OF HIGHWAYS
FRANKFORT
COUNTY OF

JEFFERSON

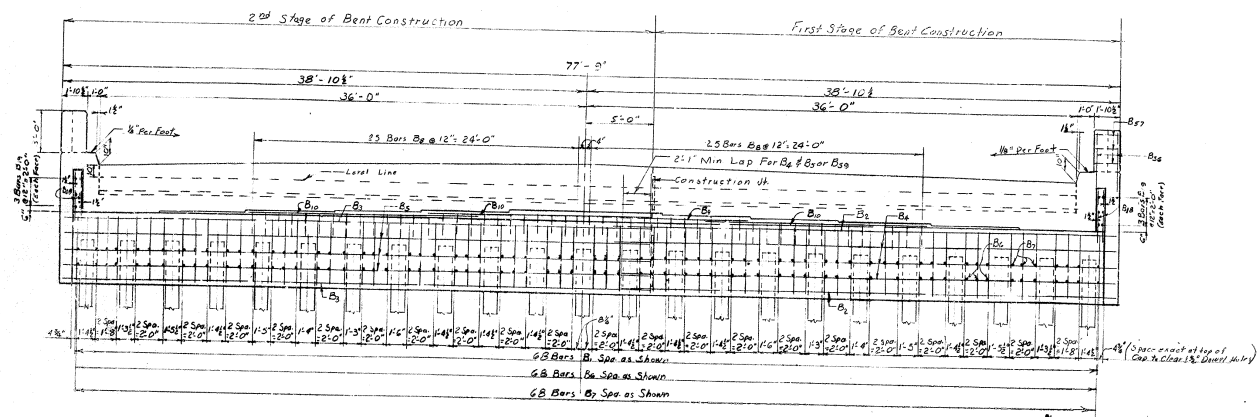
PRESTON STREET
ROAD

STATION 111+03.050 PROJECT NO.

BRIDGE NUMBER NUMBER

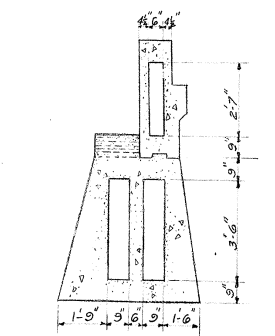
16090 8082

NO.	DATE	BY	CHKD.	APP'D.	REVISION
7	KY.				



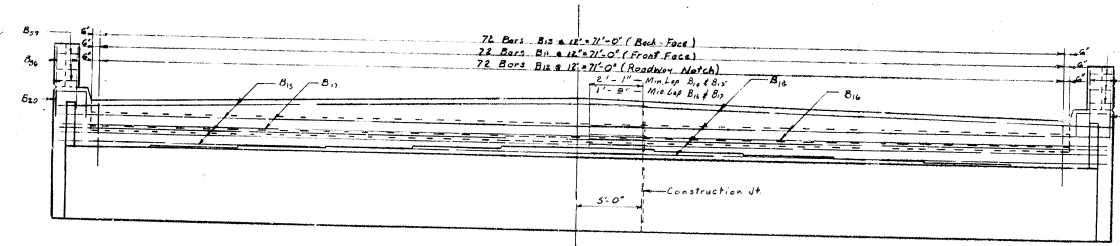
ELEVATION

Showing Reinforcement in Bent Cap.



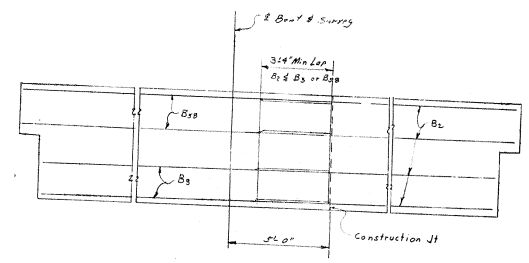
SECTION E-E

(Showing 2' deep construction Key 4)



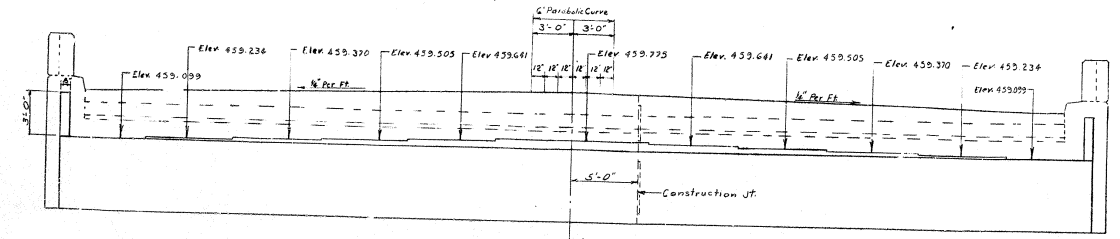
ELEVATION

Showing Reinforcement in Parapet Walls.



PART PLAN

(At Bottom of Cap)



ELEVATION

Showing Bridge Seat Elevations

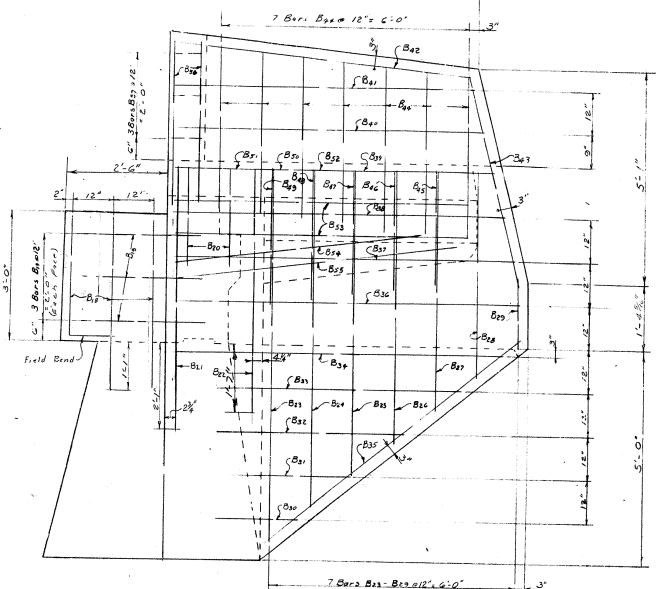
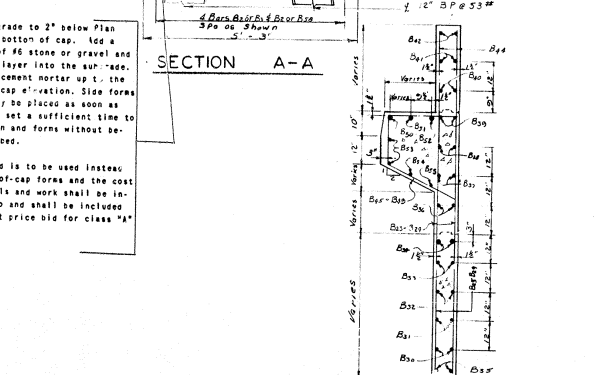
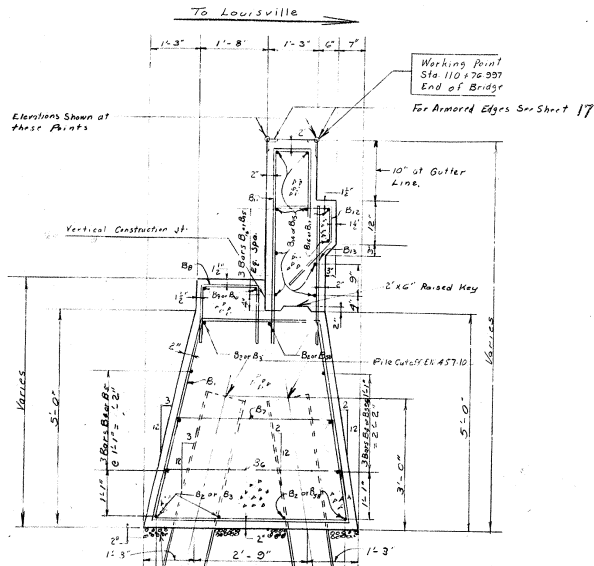
END BENT NO 1

DRAWN BY: [Name] CHECKED BY: [Name] DATE: [Date]
 PROJECT NO. 111+03.080
 SHEET NO. 5

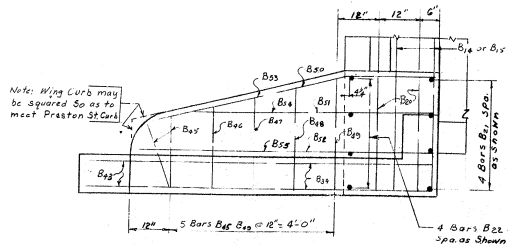
BRIDGE OVER FERN VALLEY DITCH SHEET 5

COMMONWEALTH OF KENTUCKY
 DEPARTMENT OF HIGHWAYS
 FRANKFORT
 COUNTY OF
JEFFERSON
 PRESTON STREET
 ROAD

STATION 111+03.080 PROJECT NO. [Number]
 BRIDGE NUMBER 16040 DATE [Date]



ELEVATION
Showing Reinforcement in Wing Stem, Wing Curb, & Stub Wall.

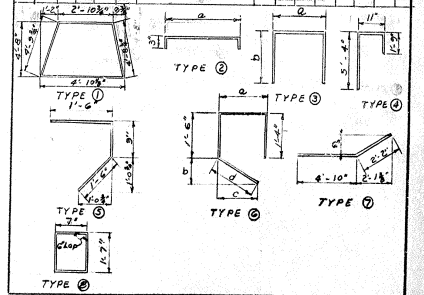


PART PLAN
Showing Reinforcement in Wing Curb.

ESTIMATE OF QUANTITIES

CONCRETE, CLASS 'A'	84.3 CU. YDS.
REINFORCEMENT	7406 LBS.

BILL OF REINFORCEMENT		REINFORCEMENT					
NO.	DESCRIPTION	LENGTH	LOCATION	B	D	C	d
		FT. IN.		FT. IN.	FT. IN.	FT. IN.	FT. IN.
B1	108	18	Beam Cap				
B2	7	17	"				
B3	3	8	"				
B4	6	15	"				
B5	3	12	"				
B6	10	18	"				
B7	3	12	"				
B8	10	18	"				
B9	3	12	"				
B10	2	12	"				
B11	2	12	"				
B12	2	12	"				
B13	2	12	"				
B14	2	12	"				
B15	2	12	"				
B16	2	12	"				
B17	2	12	"				
B18	2	12	"				
B19	2	12	"				
B20	2	12	"				
B21	2	12	"				
B22	2	12	"				
B23	2	12	"				
B24	2	12	"				
B25	2	12	"				
B26	2	12	"				
B27	2	12	"				
B28	2	12	"				
B29	2	12	"				
B30	2	12	"				
B31	2	12	"				
B32	2	12	"				
B33	2	12	"				
B34	2	12	"				
B35	2	12	"				
B36	2	12	"				
B37	2	12	"				
B38	2	12	"				
B39	2	12	"				
B40	2	12	"				
B41	2	12	"				
B42	2	12	"				
B43	2	12	"				
B44	2	12	"				
B45	2	12	"				
B46	2	12	"				
B47	2	12	"				
B48	2	12	"				
B49	2	12	"				
B50	2	12	"				
B51	2	12	"				
B52	2	12	"				
B53	2	12	"				
B54	2	12	"				
B55	2	12	"				
B56	2	12	"				
B57	2	12	"				
B58	2	12	"				
B59	2	12	"				
B60	2	12	"				
B61	2	12	"				
B62	2	12	"				
B63	2	12	"				
B64	2	12	"				
B65	2	12	"				
B66	2	12	"				
B67	2	12	"				
B68	2	12	"				
B69	2	12	"				
B70	2	12	"				
B71	2	12	"				
B72	2	12	"				
B73	2	12	"				
B74	2	12	"				
B75	2	12	"				
B76	2	12	"				
B77	2	12	"				
B78	2	12	"				
B79	2	12	"				
B80	2	12	"				
B81	2	12	"				
B82	2	12	"				
B83	2	12	"				
B84	2	12	"				
B85	2	12	"				
B86	2	12	"				
B87	2	12	"				
B88	2	12	"				
B89	2	12	"				
B90	2	12	"				
B91	2	12	"				
B92	2	12	"				
B93	2	12	"				
B94	2	12	"				
B95	2	12	"				
B96	2	12	"				
B97	2	12	"				
B98	2	12	"				
B99	2	12	"				
B100	2	12	"				



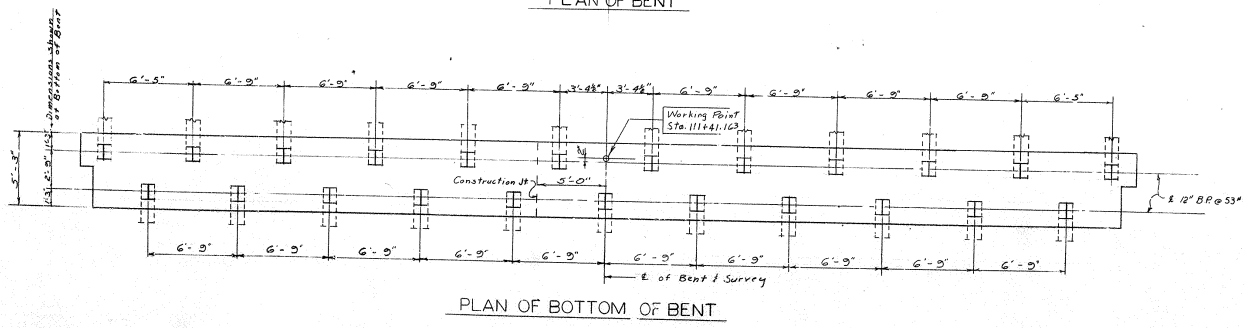
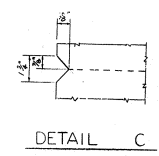
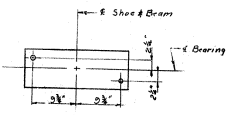
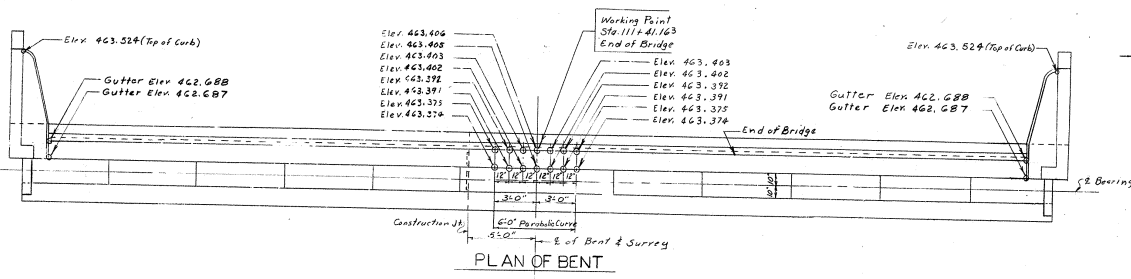
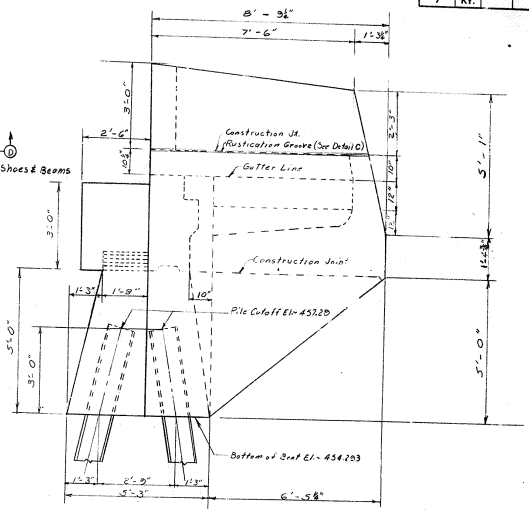
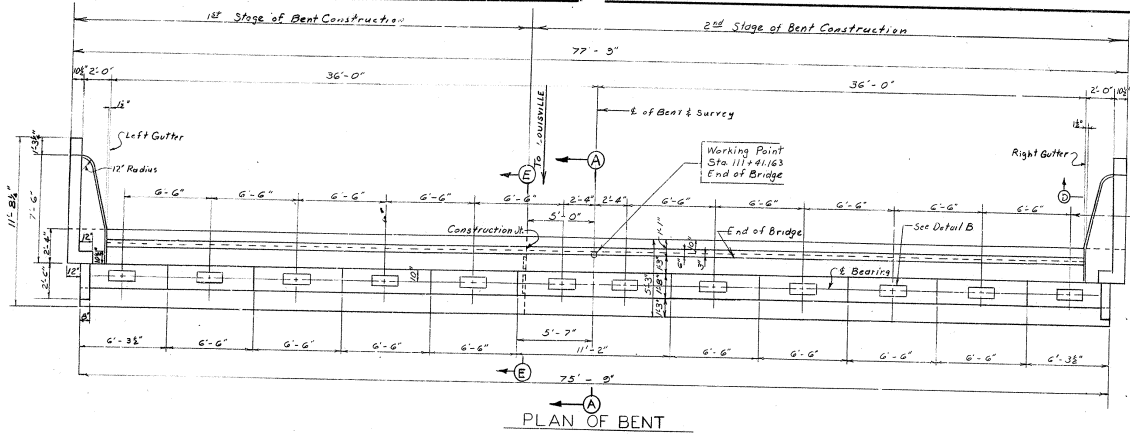
BRIDGE OVER FERN VALLEY DITCH SHEET 6

COMMONWEALTH OF KENTUCKY
DEPARTMENT OF HIGHWAYS
FRANKFORT
COUNTY OF
JEFFERSON
PRESTON STREET
ROAD

STATION 111+00.00 PROJECT NO. 16070
BRIDGE NUMBER 16070

END BENT NO. 1

NO.	DATE	BY	FOR	REVISION
7	KY.			



END BENT NO. 2

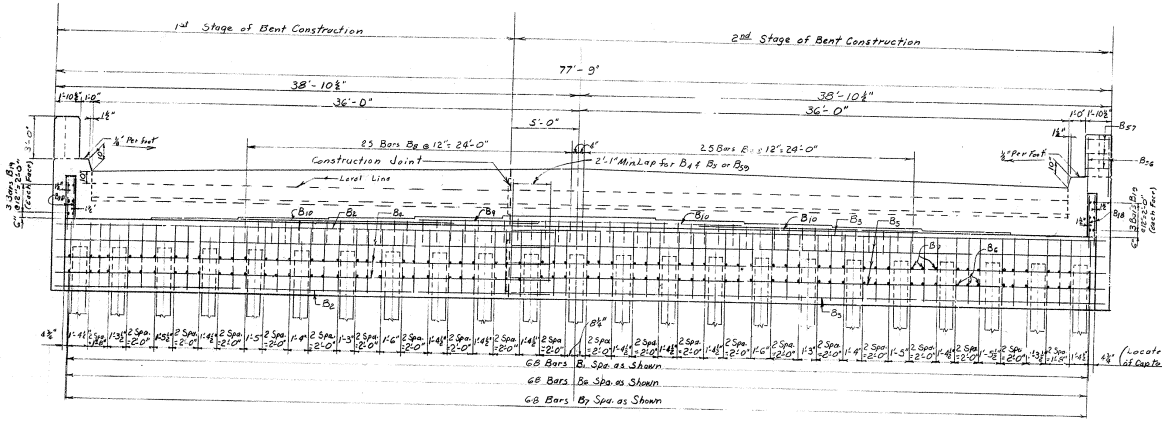
DESIGNED BY: [Signature] DATE: [Blank]
 CHECKED BY: [Signature] DATE: [Blank]
 DRAWN BY: [Signature] DATE: [Blank]

BRIDGE OVER FERN VALLEY DITCH SHEET 7

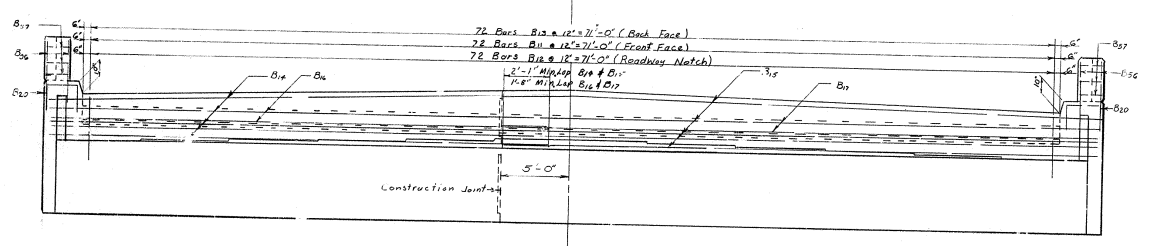
COMMONWEALTH OF KENTUCKY
 DEPARTMENT OF HIGHWAYS
 FRANKFORT
 COUNTY OF
JEFFERSON
 PRESTON STREET
 ROAD

STATION 111+03.020 PROJECT NO. [Blank]
 BRIDGE NUMBER 16040

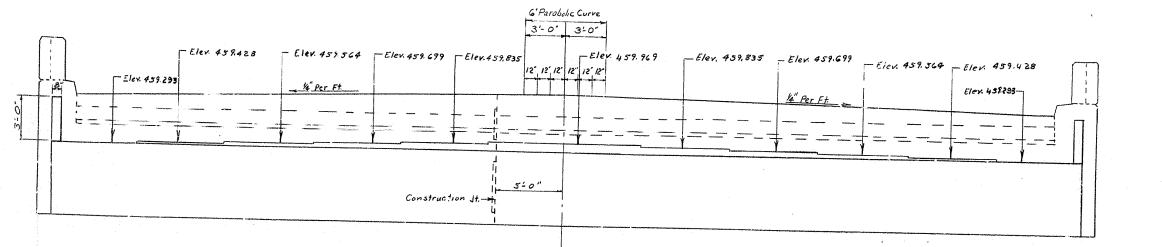
REV.	DATE	BY	CHK.	REASON
7	KY.			



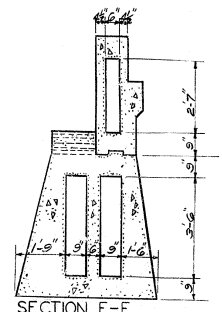
ELEVATION
Showing Reinforcement in Bent Cap.



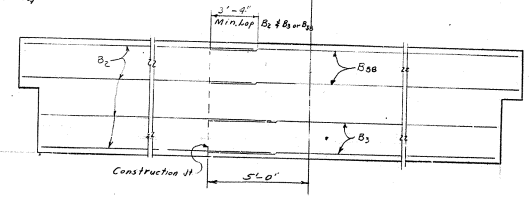
ELEVATION
Showing Reinforcement in Parapet Wall.



ELEVATION
Showing Bridge Seat Elevations.



SECTION E-E
(Showing 2' deep construction keys)

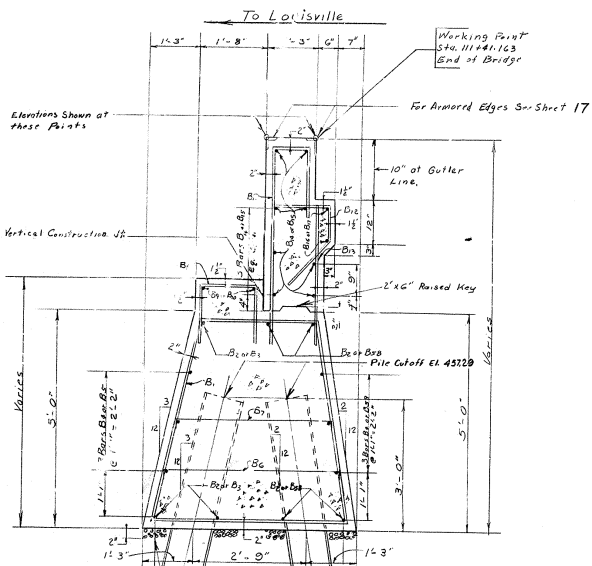


PART PLAN
(At Bottom of Cap)

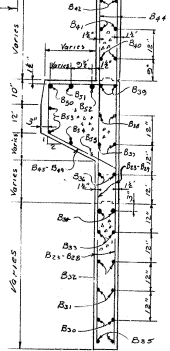
DRAWN BY: [Name]
 CHECKED BY: [Name]
 DATE: [Date]
 PROJECT NO.: [Number]
 SHEET NO.: [Number]

END BENT NO 2

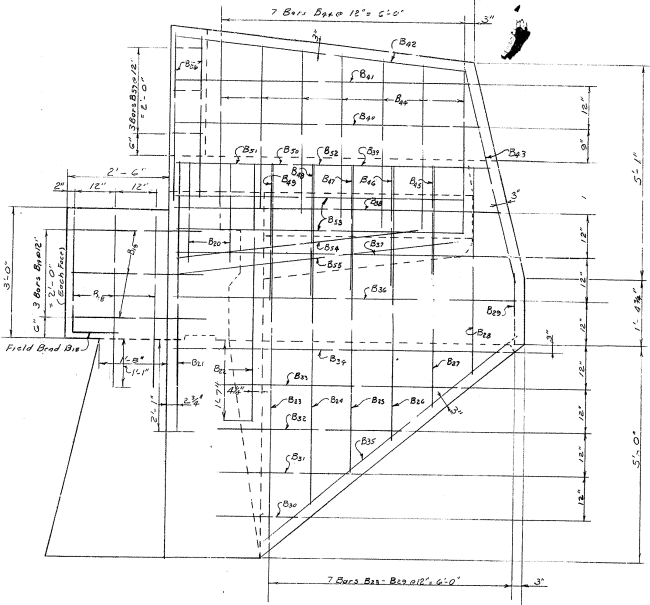
BRIDGE OVER FERN VALLEY DITCH SHEET 8
COMMONWEALTH OF KENTUCKY
 DEPARTMENT OF HIGHWAYS
 FRANKFORT
 COUNTY OF
JEFFERSON
 PRESTON STREET
 ROAD
 STATION 11+09.080 PROJECT NO.
 BRIDGE NUMBER 16040



SECTION A-A

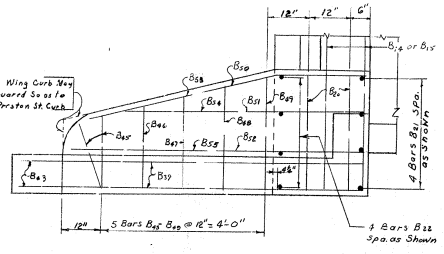


SECTION D-D



ELEVATION

Showing Reinforcement in Wing Stem, Wing Curb, & Stub Wall.



PART PLAN

Showing Reinforcement in Wing Curb.

ESTIMATE OF QUANTITIES

CONCRETE, CLASS 'A' 84.3 CU. YDS.
REINFORCEMENT 7406 LBS.

No.	QTY	REINFORCEMENT	LOCATION	LENGTH			
				FT.	IN.	FT.	IN.
B1	108	5/8	Beef Cap	12	0	0	0
B2	3	1/2	"	4	5	0	0
B3	6	5/8	"	10	0	0	0
B4	3	5/8	"	10	0	0	0
B5	12	1/2	"	4	5	0	0
B6	12	1/2	"	4	5	0	0
B7	12	1/2	"	4	5	0	0
B8	12	1/2	"	4	5	0	0
B9	12	1/2	"	4	5	0	0
B10	12	1/2	"	4	5	0	0
B11	12	1/2	"	4	5	0	0
B12	12	1/2	"	4	5	0	0
B13	12	1/2	"	4	5	0	0
B14	12	1/2	"	4	5	0	0
B15	12	1/2	"	4	5	0	0
B16	12	1/2	"	4	5	0	0
B17	12	1/2	"	4	5	0	0
B18	12	1/2	"	4	5	0	0
B19	12	1/2	"	4	5	0	0
B20	12	1/2	"	4	5	0	0
B21	12	1/2	"	4	5	0	0
B22	12	1/2	"	4	5	0	0
B23	12	1/2	"	4	5	0	0
B24	12	1/2	"	4	5	0	0
B25	12	1/2	"	4	5	0	0

BRIDGE OVER FERN VALLEY DITCH SHEET 2

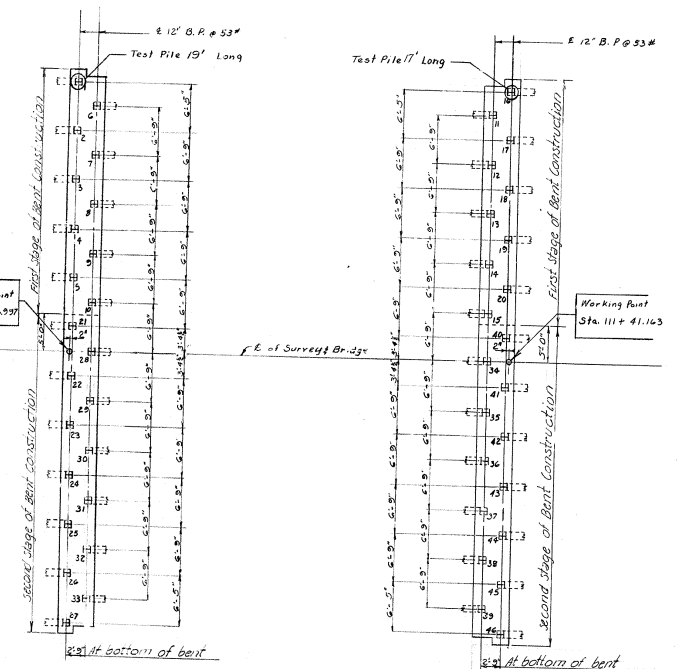
COMMONWEALTH OF KENTUCKY
DEPARTMENT OF HIGHWAYS
FRANKFORT
COUNTY OF
JEFFERSON
PRESTON STREET
ROAD
STATION 1111 03.080 PROJECT NO. 16040
BRIDGE NUMBER 16040

END BENT NO. 2

DATE: _____
DRAWN BY: _____
CHECKED BY: _____
APPROVED BY: _____

NOTE: Dress subgrade to 3" below Plan Elev. for bottom of cap. Add a 2" layer of #6 stone or gravel and tamp this layer into the subgrade. Place 1:2 cement mortar up to the bottom of cap elevation. Slope forms for cap may be placed as soon as mortar has set a sufficient time to support men and forms without being disturbed.

This method is to be used instead of bottom-of-cap forms and the cost of materials and work shall be incidental to and shall be included in the unit price bid for class "A" concrete.



END BENT NO. 1
 END BENT NO. 2
 PILING PLAN

PILE RECORD			
PILE NO.	PILE CUTOFF ELEVATION AS SHOWN ON PLANS	TIP OF PILE ELEVATION AS DRIVEN	PILE LENGTH IN PLACE LIN. FT.
END BENT NO. 1			
1	457.10		
2	457.10		
3	457.10		
4	457.10		
5	457.10		
6	457.10		
7	457.10		
8	457.10		
9	457.10		
10	457.10		
21	457.10		
22	457.10		
23	457.10		
24	457.10		
25	457.10		
26	457.10		
27	457.10		
28	457.10		
29	457.10		
30	457.10		
31	457.10		
32	457.10		
33	457.10		
END BENT NO. 2			
11	457.25		
12	457.25		
13	457.25		
14	457.25		
15	457.25		
16	457.25		
17	457.25		
18	457.25		
19	457.25		
20	457.25		
34	457.25		
35	457.25		
36	457.25		
37	457.25		
38	457.25		
39	457.25		
40	457.25		
41	457.25		
42	457.25		
43	457.25		
44	457.25		
45	457.25		
46	457.25		

NOTE: This Pile Record does not replace other records of piles required to be kept and submitted by the Resident Engineer. After all piles have been driven the Resident Engineer shall record the tip-of-pile elevation as driven, the length of pile in place, the calculated bearing capacity of each pile, and shall return one blueprint copy of this sheet with this data to the Director of Bridges so that the data may be recorded on the original plans. Lengths of piles in place shown hereon are the actual lengths of piles in the finished structure below cutoff elevation and are not necessarily pay items.

PILE LAYOUT & RECORD

BRIDGE OVER FERN VALLEY DITCH SHEET 10

COMMONWEALTH OF KENTUCKY
 DEPARTMENT OF HIGHWAYS
 FRANKFORT
 COUNTY OF
 JEFFERSON
 PRESTON-STREET
 ROAD

STATION 111+05.080 PROJECT NO. _____
 BRIDGE NUMBER 16040 INCH NO. _____

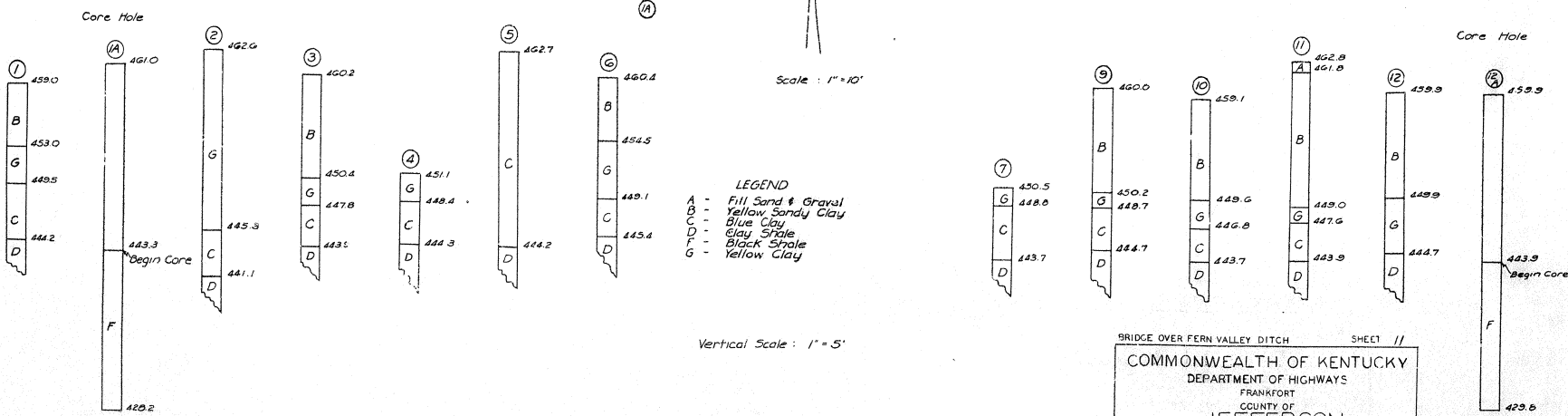
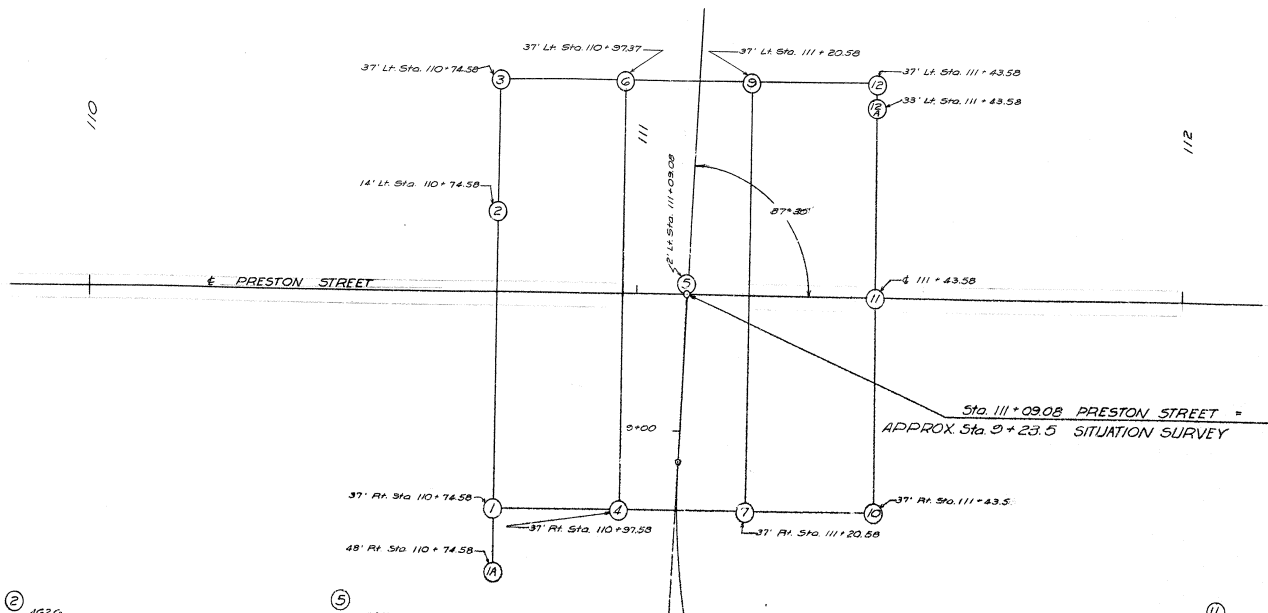
SOUNDING

LAYOUT

JEFFERSON CO. 5 478 (12)

PREPARED BY	DATE
PROJECT	2024
NO.	

Preston Street



Scale: 1" = 10'

- LEGEND**
- A - Fill Sand & Gravel
 - B - Yellow Sandy Clay
 - C - Blue Clay
 - D - Clay Shale
 - F - Black Shale
 - G - Yellow Clay

Vertical Scale: 1" = 5'

50% Recovery

80% Recovery

BRIDGE OVER FERN VALLEY DITCH SHEET 11

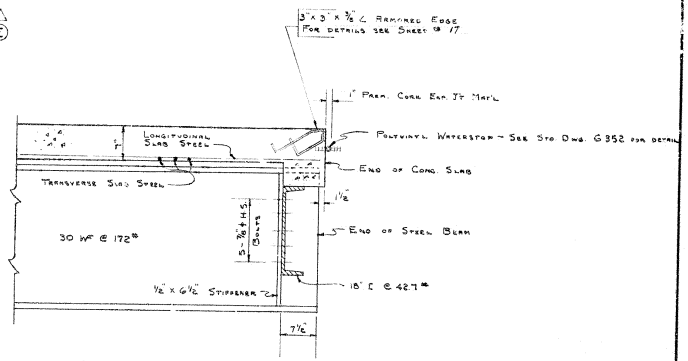
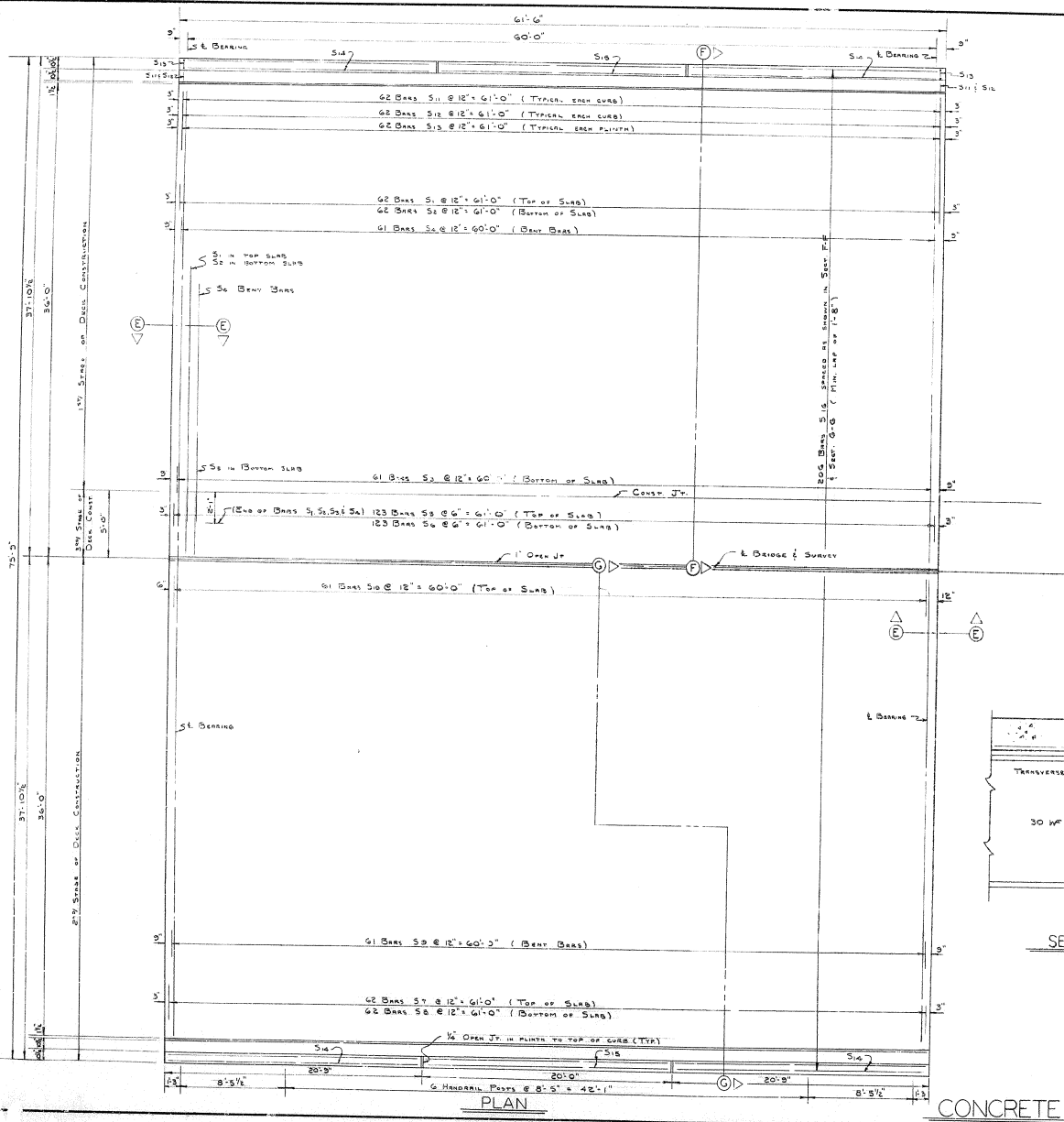
COMMONWEALTH OF KENTUCKY
DEPARTMENT OF HIGHWAYS
FRANKFORT
COUNTY OF
JEFFERSON
PRESTON STREET

ROAD PROJECT NO.

STATION 111+09.08	DWG. NO.
BRIDGE NUMBER	16040

NO. OF SHEETS	NO. OF SHEETS	NO. OF SHEETS	NO. OF SHEETS	NO. OF SHEETS	NO. OF SHEETS
7	KY.				

DESIGNED BY	DATE
CHECKED BY	DATE
APPROVED BY	DATE
REVISIONS	



SECTION E-E

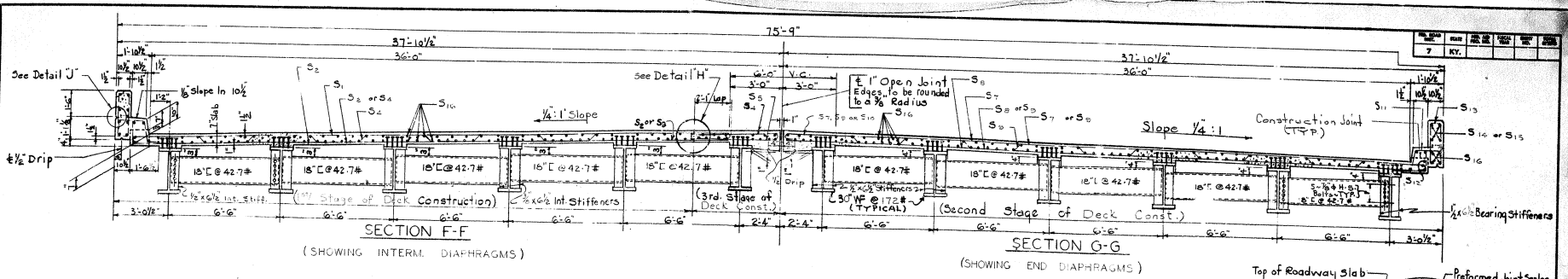
CONCRETE SLAB DETAILS

BRIDGE OVER FERN VALLEY DITCH SHEET 12

COMMONWEALTH OF KENTUCKY
 DEPARTMENT OF HIGHWAYS
 FRANKFORT
 COUNTY OF
 JEFFERSON
 PRESTON STREET
 ROAD

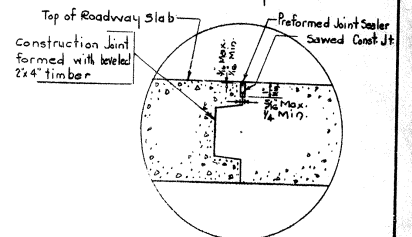
STATION 111 + 09.080 PROJECT NO. 16040

BRIDGE NUMBER 16040



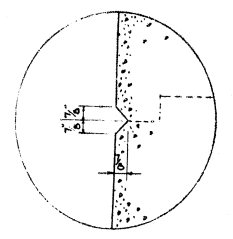
BILL OF REINFORCEMENT

Mark	Type	No	Size	Length	LOCATION	a	b	c	d
S1	⊙	62	5	35	Top Slab 1st pour	33	0	10	41
S2	⊙	62	5	33	Bot Slab 1st pour	0	10	41	33
S3	⊙	61	5	36	Top Slab 1st pour	-	-	-	-
S4	⊙	61	5	36	Bot Slab 1st pour	-	-	-	-
S5	⊙	123	6	5	Top Slab 2nd pour	4	6	1	0
S6	⊙	123	6	5	Bot Slab 2nd pour	0	4	3	6
S7	⊙	62	5	37	Top Slab 2nd pour	36	0	10	44
S8	⊙	62	5	36	Bot Slab 2nd pour	-	-	-	-
S9	⊙	61	5	39	Beam Bars 2nd pour	-	-	-	-
S10	⊙	61	4	3	Top Chord 2nd pour	3	3	0	8
S11	⊙	124	4	3	Chord	0	4	3	6
S12	⊙	124	4	3	Chord	-	-	-	-
S13	⊙	124	4	3	Chord	-	-	-	-
S14	⊙	124	4	3	Chord	-	-	-	-
S15	⊙	16	1	80	Plumbers	-	-	-	-
S16	⊙	8	1	19	Plumbers	-	-	-	-
S17	⊙	412	4	31	Sho. Chord (long run)	-	-	-	-

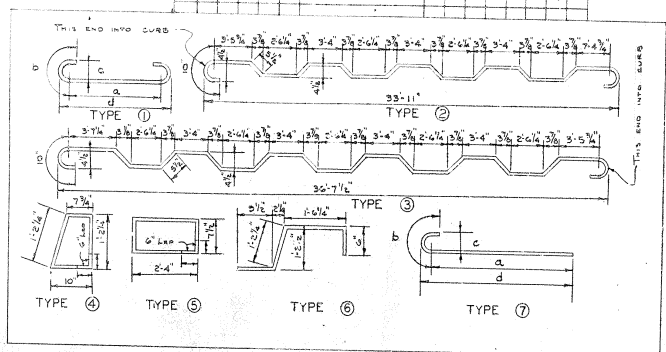


DETAIL 'H'
For additional details & notes on Construction Joint see Std. Dwg. N 8 & 55

ESTIMATE OF QUANTITIES
 CONCRETE CLASS 'A' 117.2 CU YDS.
 REINFORCEMENT 26,569 LBS.
** This quantity does not include concrete due to subtraction of steel beams.*



DETAIL 'J'
(Showing Rustication Groove Details)



CONCRETE SLAB DETAILS

BRIDGE OVER FERN VALLEY DITCH SHEET 13

COMMONWEALTH OF KENTUCKY
 DEPARTMENT OF HIGHWAYS
 FRANKFORT
 COUNTY OF
JEFFERSON
 PRESTON STREET
 ROAD

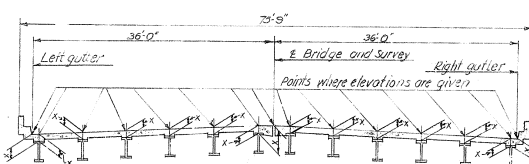
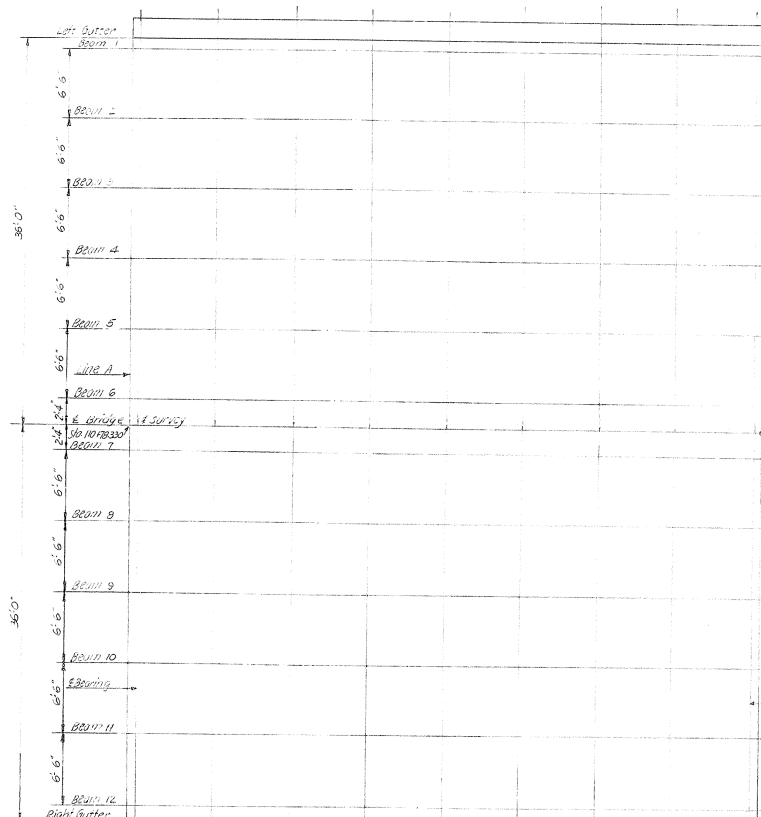
STATION 111 + 09.080 PROJECT NO. 16040
 BRIDGE NUMBER 16040

DRAWN BY: [Signature]
 CHECKED BY: [Signature]
 DATE: [Date]

DESIGNED BY: *[Signature]* DATE: _____
 CHECKED BY: *[Signature]* DATE: _____
 DRAWN BY: _____ DATE: _____
 REVISION: _____
 PROJECT NO.: _____

LOCATION	LEFT GUTTER		BEAM NO. 1		BEAM NO. 2		BEAM NO. 3		BEAM NO. 4		BEAM NO. 5		BEAM NO. 6		BRIDGE & SURVEY	
	CONSTR. STEEL ELEV.	DIMEN- TION	CONSTR. STEEL ELEV.	DIMEN- TION	CONSTR. STEEL ELEV.	DIMEN- TION	CONSTR. STEEL ELEV.	DIMEN- TION	CONSTR. STEEL ELEV.	DIMEN- TION	CONSTR. STEEL ELEV.	DIMEN- TION	CONSTR. STEEL ELEV.	DIMEN- TION	CONSTR. STEEL ELEV.	DIMEN- TION
LINE A TOP	462.486	Y	462.519	Y	462.783	Y	462.919	Y	463.050	Y	463.188	Y	463.207	Y	463.207	Y
GRID LN 01 TOP	462.492	Y	462.516	Y	462.783	Y	462.919	Y	463.050	Y	463.188	Y	463.207	Y	463.207	Y
GRID LN 02 TOP	462.497	Y	462.516	Y	462.783	Y	462.919	Y	463.050	Y	463.188	Y	463.207	Y	463.207	Y
GRID LN 03 TOP	462.497	Y	462.516	Y	462.783	Y	462.919	Y	463.050	Y	463.188	Y	463.207	Y	463.207	Y
GRID LN 04 TOP	462.499	Y	462.516	Y	462.783	Y	462.919	Y	463.050	Y	463.188	Y	463.207	Y	463.207	Y
GRID LN 05 TOP	462.725	Y	462.713	Y	462.885	Y	463.020	Y	463.156	Y	463.291	Y	463.425	Y	463.442	Y
GRID LN 06 TOP	462.763	Y	462.767	Y	462.902	Y	463.038	Y	463.173	Y	463.308	Y	463.442	Y	463.442	Y
GRID LN 07 TOP	462.762	Y	462.766	Y	462.902	Y	463.038	Y	463.173	Y	463.308	Y	463.442	Y	463.442	Y
GRID LN 08 TOP	462.723	Y	462.727	Y	462.883	Y	463.018	Y	463.153	Y	463.288	Y	463.422	Y	463.422	Y
GRID LN 09 TOP	462.685	Y	462.710	Y	462.845	Y	462.981	Y	463.116	Y	463.251	Y	463.386	Y	463.422	Y
LINE B TOP	462.487	Y	462.711	Y	462.846	Y	462.982	Y	463.117	Y	463.252	Y	463.386	Y	463.422	Y

LOCATION	BRIDGE & SURVEY		BEAM NO. 7		BEAM NO. 8		BEAM NO. 9		BEAM NO. 10		BEAM NO. 11		BEAM NO. 12		RIGHT GUTTER	
	CONSTR. STEEL ELEV.	DIMEN- TION	CONSTR. STEEL ELEV.	DIMEN- TION	CONSTR. STEEL ELEV.	DIMEN- TION	CONSTR. STEEL ELEV.	DIMEN- TION	CONSTR. STEEL ELEV.	DIMEN- TION	CONSTR. STEEL ELEV.	DIMEN- TION	CONSTR. STEEL ELEV.	DIMEN- TION	CONSTR. STEEL ELEV.	DIMEN- TION
LINE A TOP	462.407	Y	463.054	Y	462.922	Y	463.001	Y	462.787	Y	462.448	Y	462.513	Y	462.488	Y
GRID LN 01 TOP	463.120	Y	463.054	Y	462.922	Y	463.001	Y	462.787	Y	462.448	Y	462.513	Y	462.488	Y
GRID LN 02 TOP	463.189	Y	463.137	Y	463.067	Y	462.986	Y	462.866	Y	462.710	Y	462.516	Y	462.492	Y
GRID LN 03 TOP	463.155	Y	463.203	Y	463.067	Y	462.986	Y	462.866	Y	462.710	Y	462.516	Y	462.492	Y
GRID LN 04 TOP	463.444	Y	463.255	Y	463.120	Y	462.986	Y	462.866	Y	462.710	Y	462.516	Y	462.492	Y
GRID LN 05 TOP	463.444	Y	463.255	Y	463.120	Y	462.986	Y	462.866	Y	462.710	Y	462.516	Y	462.492	Y
GRID LN 06 TOP	463.444	Y	463.255	Y	463.120	Y	462.986	Y	462.866	Y	462.710	Y	462.516	Y	462.492	Y
GRID LN 07 TOP	463.444	Y	463.255	Y	463.120	Y	462.986	Y	462.866	Y	462.710	Y	462.516	Y	462.492	Y
GRID LN 08 TOP	463.442	Y	463.255	Y	463.120	Y	462.986	Y	462.866	Y	462.710	Y	462.516	Y	462.492	Y
GRID LN 09 TOP	463.404	Y	463.255	Y	463.120	Y	462.986	Y	462.866	Y	462.710	Y	462.516	Y	462.492	Y
LINE B TOP	463.405	Y	463.252	Y	463.117	Y	462.982	Y	462.846	Y	462.711	Y	462.516	Y	462.487	Y



TYPICAL CROSS SECTION
CONSTRUCTION ELEVATIONS

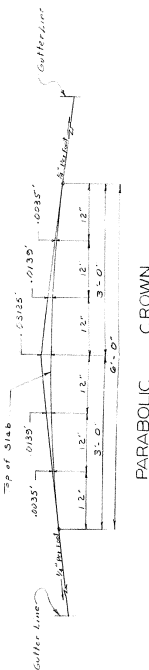
- CONSTRUCTION NOTE**
1. Take elevations on top of steel at points indicated after diaphragms and lateral bracing are in place and before forms for concrete slab have been put in place.
 2. Compute dimension "x" as follows: Construction Elevation minus Steel Elevation equals Dimension "x". Construction Elevations include camber due to weight of steel beam, concrete slab, plinth, curb, handrail and future surfacing.
 3. For setting templates, measure Dimension "x" above top of steel for top of template. Do not set template by elevations.
 4. Construct handrail plinth to curb grade. Do not add camber to handrail plinth.

BRIDGE OVER FERN VALLEY DITCH SHEET 14

COMMONWEALTH OF KENTUCKY
 DEPARTMENT OF HIGHWAYS
 TRANSPORTATION
 COUNTY OF JEFFERSON
 PRESTON STREET ROAD

STATION 11109+290 PROJECT NO. _____

BRIDGE NUMBER 16040



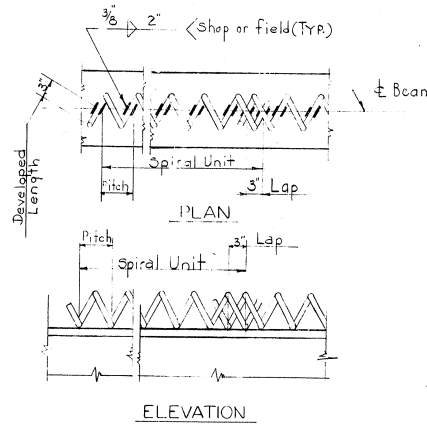
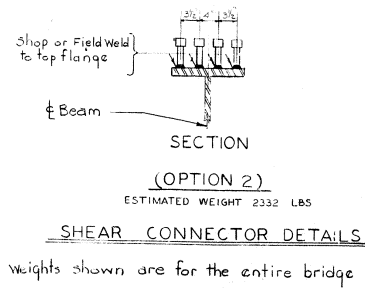
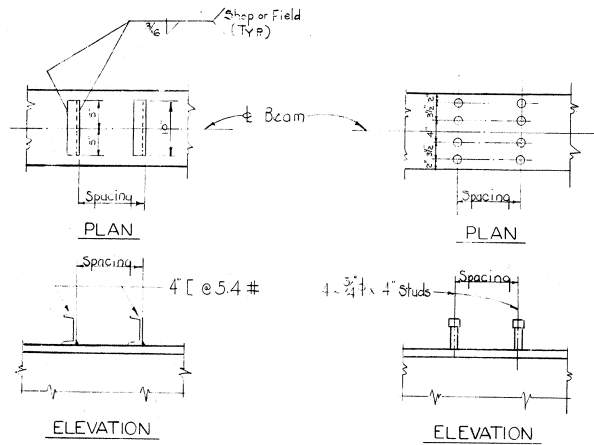
NO.	DATE	BY	CHK.	APP.	REVISION
7	KY.				

Studs	16 Stud @ 7 1/2" = 10'-0"	13 Stud @ 9" = 9'-9"	20 Stud @ 12" = 20'-0"	13 Stud @ 9" = 9'-9"	16 Stud @ 7 1/2" = 10'-0"
Spirals	30 Stud @ 4" = 10'-0"	24 Stud @ 5" = 10'-0"	36 Stud @ 6" = 10'-0"	24 Stud @ 5" = 10'-0"	30 Stud @ 4" = 10'-0"
Channels	17 Stud @ 7" = 5'-11"	14 Stud @ 8 1/2" = 5'-11"	20 Stud @ 12" = 20'-0"	14 Stud @ 8 1/2" = 5'-11"	17 Stud @ 7" = 5'-11"

2" Bearing

60'-0" / 61'-3"

SHEAR CONNECTORS



TOTAL ESTIMATE OF STRUCTURAL STEEL

STRUCTURAL STEEL	143,920 LBS.
FIXED & EXPANSION SHOES	3,780 LBS.
* TOTAL	147,700 LBS.

* DOES NOT INCLUDE SHEAR CONNECTORS OR WELD MATERIAL

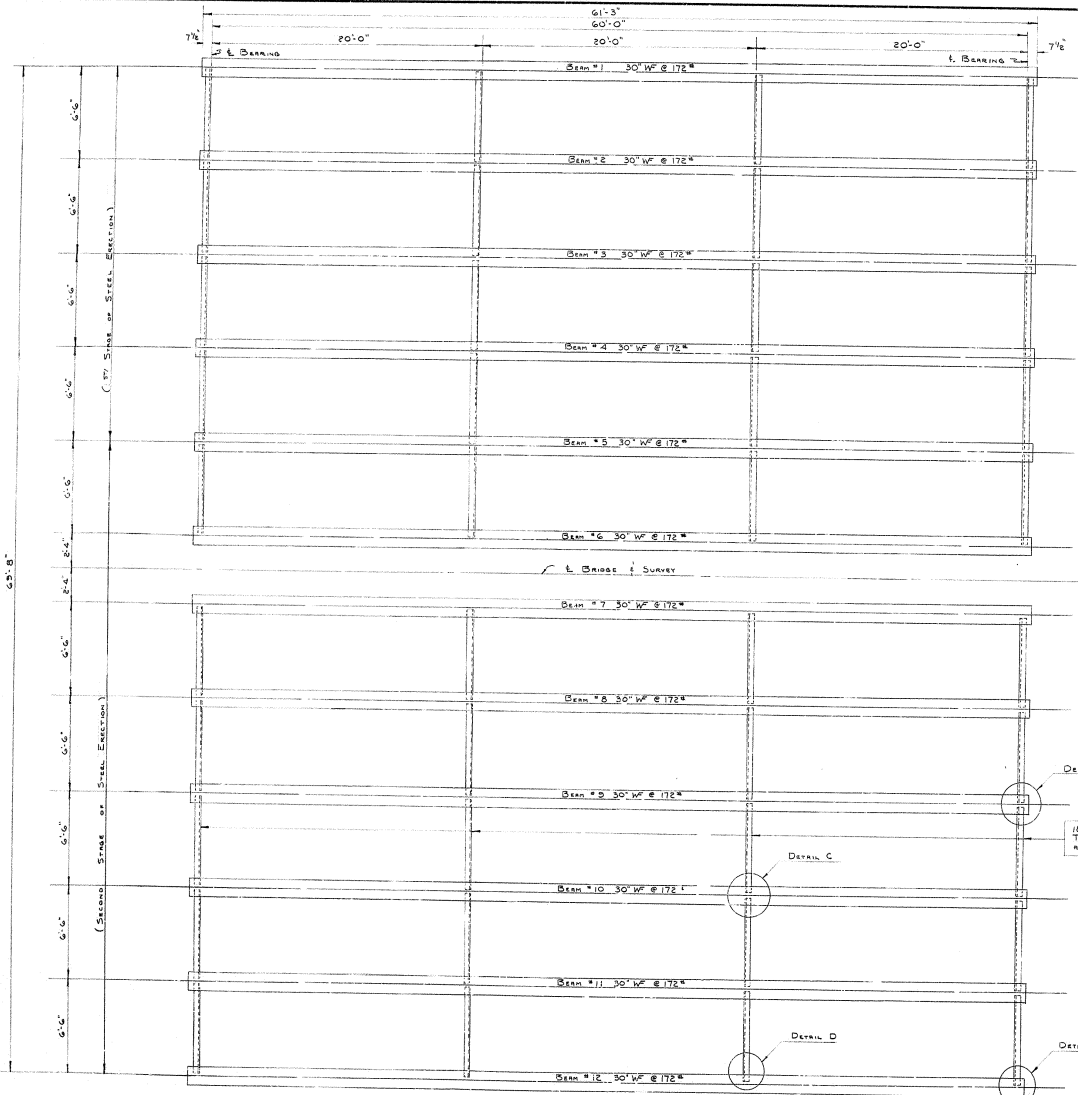
SHEAR CONNECTOR DETAILS

BRIDGE OVER FERN VALLEY DITCH SHEET 16

COMMONWEALTH OF KENTUCKY
 DEPARTMENT OF HIGHWAYS
 FRANKFORT
 COUNTY OF
 JEFFERSON
 PRESTON STREET
 ROAD

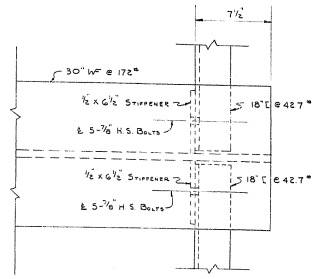
STATION	111 + 09.680	PROJECT NO.	
BRIDGE NUMBER		BRIDGE NO.	16040

NO. SHEETS	DATE	PREP. BY	CHECKED BY	SCALE	DATE
7	KY.				

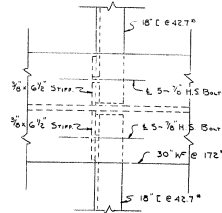


FRAMING PLAN

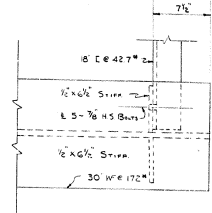
STEEL FRAMING PLAN



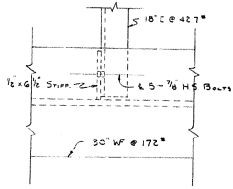
DETAIL A
(TYPICAL FOR BEARING STIFFENERS)
(INTERIOR BEAM)



DETAIL C
(TYPICAL FOR INTER STIFFENERS)
(INTERIOR BEAM)



DETAIL B
(TYPICAL FOR BEARING STIFFENERS)
(EXTERIOR BEAM)



DETAIL D
(TYPICAL FOR INTER STIFFENERS)
BEAMS 1, 6, 7, 12

DESIGNED BY: [Signature]
 CHECKED BY: [Signature]
 DATE: [Date]
 PROJECT: [Project Name]

BRIDGE OVER FERN VALLEY DITCH SHEET 15

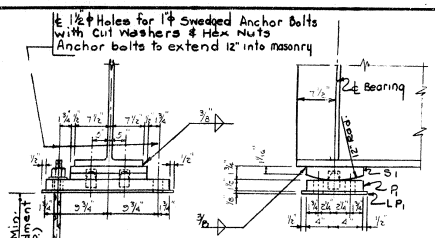
COMMONWEALTH OF KENTUCKY
 DEPARTMENT OF HIGHWAYS
 FRANKFORT
 COUNTY OF
JEFFERSON
 PRESTON STREET
 ROAD

STATION 111 + 09.980 PROJECT NO. 16040

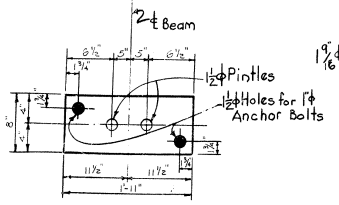
BRIDGE NUMBER DATE DRAWING NO. 16040

REV.	DATE	BY	CHK	APP
7	NY.			

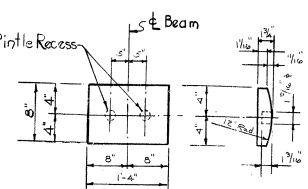
SURFACE FINISH OF STEEL - SPECIFICATIONS	
Steel Slabs	A.S.A. 2000
Heavy Plates in Contact in Shown to be welded	A.S.A. 1000
Milled Ends of Compression Members, Stiffeners & Fillers	A.S.A. 500
Bridge Rollers & Rockers	A.S.A. 250
Pins & Pin Holes	A.S.A. 125
A.S.T.M. Specifications	
Structural Steel	Current Specifications
Steel Pins	Also Current Spec. (Grade 1016 to 1030 Inc.)
Sheet Lead & Lead for Anchor Jowel Holes	824 Current Spec.
Pintles	Also or Also Current Spec. (Grade 1016 to 1030 Inc.)



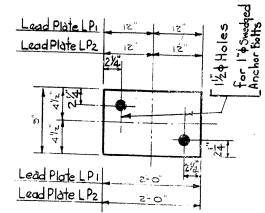
FIXED END SHOE



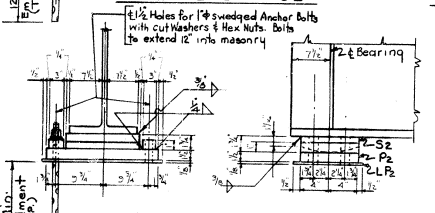
PLAN MASONRY PLATE P1



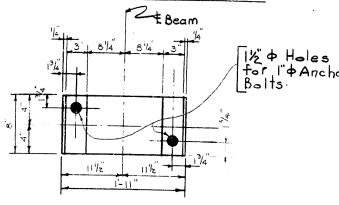
SOLE PLATE S1



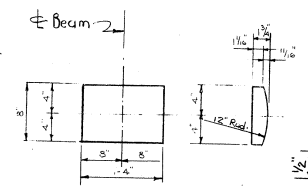
LEAD PLATES LPI OR LP2



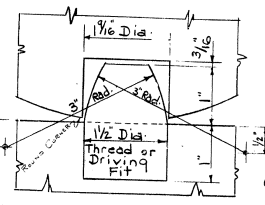
EXPANSION END SHOE



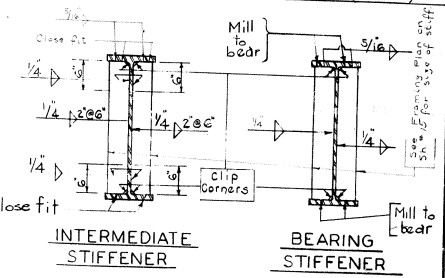
PLAN MASONRY PLATE P2



SOLE PLATE S2

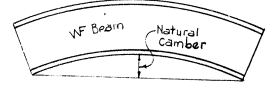


DETAIL OF PINTLE AND RECESS

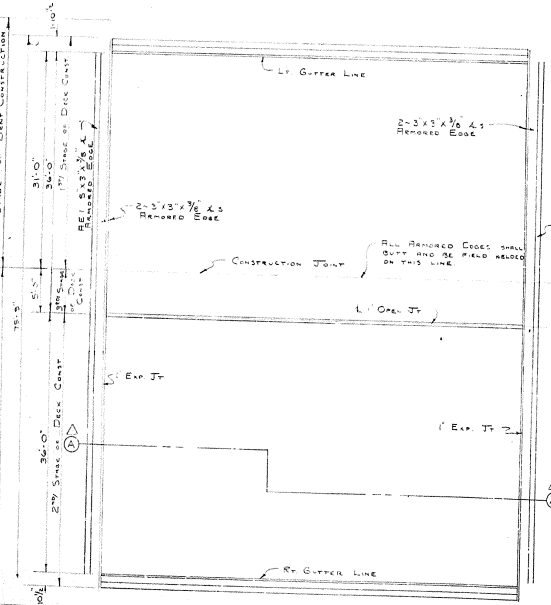


INTERMEDIATE STIFFENER

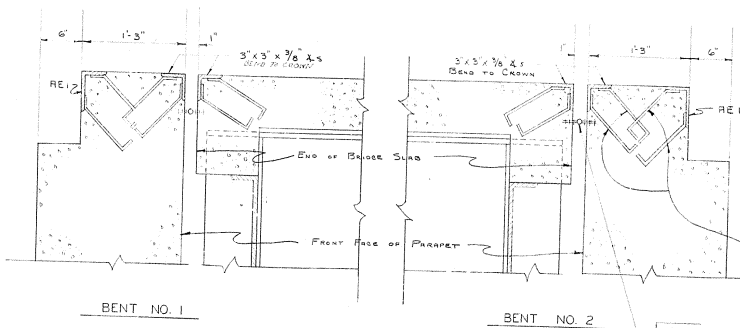
BEARING STIFFENER



SKETCH
(Natural Camber of beam up)
(No Shop Camber of beams required)



PLAN
(SHOWING ARMORED EDGES)



SECTION A-A
(SHOWING DETAILS OF ARMORED EDGES)

ESTIMATE OF QUANTITIES	
EXP. SHOE ASSEMBLY	FIXED SHOE ASSEMBLY
* STRUCTURAL STEEL - 164 LBS.	* STRUCTURAL STEEL - 151 LBS.
* WEIGHTS SHOWN INCLUDE ALL COMPONENT PARTS IN ONE ASSEMBLY	
* WEIGHS SHOWN INCLUDE ALL COMPONENT PARTS IN ONE ASSEMBLY	
* WEIGHS SHOWN INCLUDE ALL COMPONENT PARTS IN ONE ASSEMBLY	
* WEIGHS SHOWN INCLUDE ALL COMPONENT PARTS IN ONE ASSEMBLY	

BRIDGE OVER FERN VALLEY DITCH SHEET 77

COMMONWEALTH OF KENTUCKY
DEPARTMENT OF HIGHWAYS
FRANKFORT
COUNTY OF JEFFERSON
PRESTON STREET
ROAD

STATION 111 + 09.00 PROJECT NO. 16047

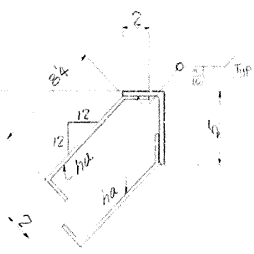
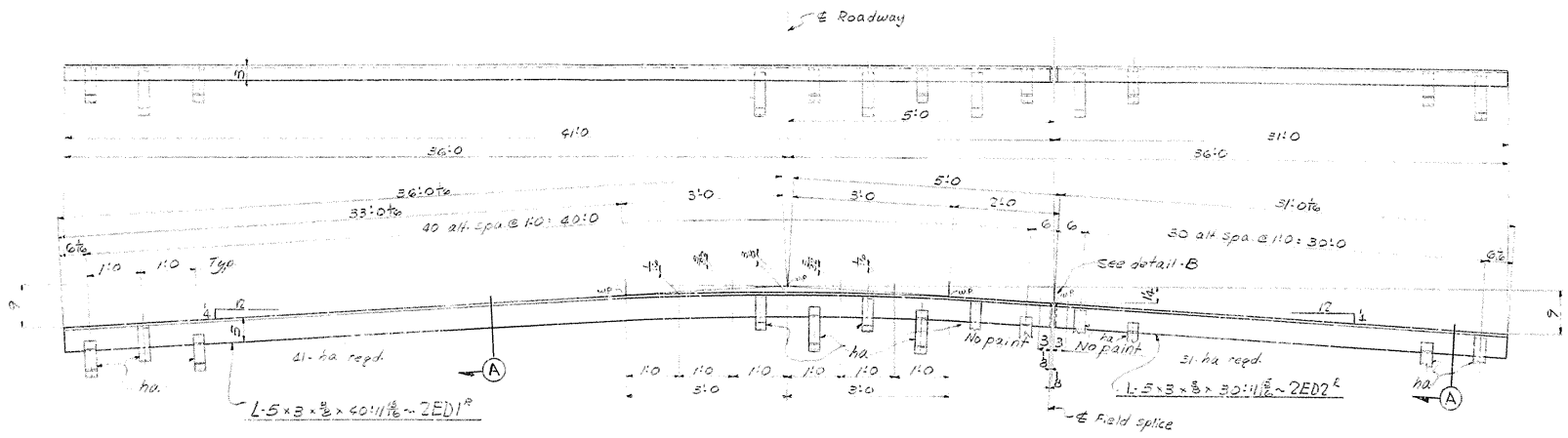
DATE 1/20/47

ERECTOR LIST
FIELD RIVETS AND BOLTS
AMERICAN BRIDGE

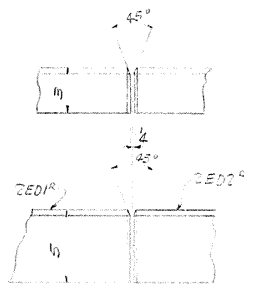
LINE NO.	NO. PCS.	DIAM.	RIVETS		BOLTS			THICKNESS OF MATERIAL CONNECTED	LOCATION
			UNDR. HEAD	HEAD	HEAVY HEX.	TYPE OF BOLT	GRIP		
1	200								
2	200							100' - BEAMS 100' - BEAMS	
3									
4									
5									
6									
7									
8									
9									
10									
11									
12									
13									
14									
15									
16									
17									
18									
19									
20									
21									
22									
23									
24									
25									
26									
27									
28									
29									
30									
31									
32									
33									
34									
35									
36									
37									
38									
39									
40									
41									
42									
43									
44									
45									
46									
47									
48									
49									
50									
51									
52									
53									
54									
55									
56									
57									
58									
59									
60									
61									
62									
63									
64									
65									
66									
67									
68									
69									
70									
71									
72									
73									
74									
75									
76									
77									
78									
79									
80									
81									
82									
83									
84									
85									
86									
87									
88									
89									
90									
91									
92									
93									
94									
95									
96									
97									
98									
99									
100									

BOLT LENGTHS FOR VARIOUS GRIPS (ONE FLAT WASHER)

Grip	Bolt Diameter				Grip	Bolt Diameter			
	1/2"	3/4"	1"	1 1/4"		1 1/2"	1 3/4"	2"	2 1/2"
1/2"	1 1/2"	1 3/4"	2"	2 1/4"	1/2"	1 1/2"	1 3/4"	2"	2 1/4"
3/4"	1 3/4"	2"	2 1/4"	2 3/4"	3/4"	1 3/4"	2"	2 1/4"	2 3/4"
1"	2"	2 1/4"	2 3/4"	3"	1"	2"	2 1/4"	2 3/4"	3"
1 1/4"	2 1/4"	2 3/4"	3"	3 1/4"	1 1/4"	2 1/4"	2 3/4"	3"	3 1/4"
1 1/2"	2 3/4"	3"	3 1/4"	3 3/4"	1 1/2"	2 3/4"	3"	3 1/4"	3 3/4"
1 3/4"	3"	3 1/4"	3 3/4"	4"	1 3/4"	3"	3 1/4"	3 3/4"	4"
2"	3 1/4"	3 3/4"	4"	4 1/4"	2"	3 1/4"	3 3/4"	4"	4 1/4"
2 1/4"	3 3/4"	4"	4 1/4"	4 3/4"	2 1/4"	3 3/4"	4"	4 1/4"	4 3/4"
2 3/4"	4"	4 1/4"	4 3/4"	5"	2 3/4"	4"	4 1/4"	4 3/4"	5"
3"	4 1/4"	4 3/4"	5"	5 1/4"	3"	4 1/4"	4 3/4"	5"	5 1/4"
3 1/4"	4 3/4"	5"	5 1/4"	5 3/4"	3 1/4"	4 3/4"	5"	5 1/4"	5 3/4"
3 3/4"	5"	5 1/4"	5 3/4"	6"	3 3/4"	5"	5 1/4"	5 3/4"	6"
4"	5 1/4"	5 3/4"	6"	6 1/4"	4"	5 1/4"	5 3/4"	6"	6 1/4"
4 1/4"	5 3/4"	6"	6 1/4"	6 3/4"	4 1/4"	5 3/4"	6"	6 1/4"	6 3/4"
4 3/4"	6"	6 1/4"	6 3/4"	7"	4 3/4"	6"	6 1/4"	6 3/4"	7"
5"	6 1/4"	6 3/4"	7"	7 1/4"	5"	6 1/4"	6 3/4"	7"	7 1/4"
5 1/4"	6 3/4"	7"	7 1/4"	7 3/4"	5 1/4"	6 3/4"	7"	7 1/4"	7 3/4"
5 3/4"	7"	7 1/4"	7 3/4"	8"	5 3/4"	7"	7 1/4"	7 3/4"	8"
6"	7 1/4"	7 3/4"	8"	8 1/4"	6"	7 1/4"	7 3/4"	8"	8 1/4"
6 1/4"	7 3/4"	8"	8 1/4"	8 3/4"	6 1/4"	7 3/4"	8"	8 1/4"	8 3/4"
6 3/4"	8"	8 1/4"	8 3/4"	9"	6 3/4"	8"	8 1/4"	8 3/4"	9"
7"	8 1/4"	8 3/4"	9"	9 1/4"	7"	8 1/4"	8 3/4"	9"	9 1/4"
7 1/4"	8 3/4"	9"	9 1/4"	9 3/4"	7 1/4"	8 3/4"	9"	9 1/4"	9 3/4"
7 3/4"	9"	9 1/4"	9 3/4"	10"	7 3/4"	9"	9 1/4"	9 3/4"	10"
8"	9 1/4"	9 3/4"	10"	10 1/4"	8"	9 1/4"	9 3/4"	10"	10 1/4"
8 1/4"	9 3/4"	10"	10 1/4"	10 3/4"	8 1/4"	9 3/4"	10"	10 1/4"	10 3/4"
8 3/4"	10"	10 1/4"	10 3/4"	11"	8 3/4"	10"	10 1/4"	10 3/4"	11"
9"	10 1/4"	10 3/4"	11"	11 1/4"	9"	10 1/4"	10 3/4"	11"	11 1/4"
9 1/4"	10 3/4"	11"	11 1/4"	11 3/4"	9 1/4"	10 3/4"	11"	11 1/4"	11 3/4"
9 3/4"	11"	11 1/4"	11 3/4"	12"	9 3/4"	11"	11 1/4"	11 3/4"	12"
10"	11 1/4"	11 3/4"	12"	12 1/4"	10"	11 1/4"	11 3/4"	12"	12 1/4"
10 1/4"	11 3/4"	12"	12 1/4"	12 3/4"	10 1/4"	11 3/4"	12"	12 1/4"	12 3/4"
10 3/4"	12"	12 1/4"	12 3/4"	13"	10 3/4"	12"	12 1/4"	12 3/4"	13"
11"	12 1/4"	12 3/4"	13"	13 1/4"	11"	12 1/4"	12 3/4"	13"	13 1/4"
11 1/4"	12 3/4"	13"	13 1/4"	13 3/4"	11 1/4"	12 3/4"	13"	13 1/4"	13 3/4"
11 3/4"	13"	13 1/4"	13 3/4"	14"	11 3/4"	13"	13 1/4"	13 3/4"	14"
12"	13 1/4"	13 3/4"	14"	14 1/4"	12"	13 1/4"	13 3/4"	14"	14 1/4"
12 1/4"	13 3/4"	14"	14 1/4"	14 3/4"	12 1/4"	13 3/4"	14"	14 1/4"	14 3/4"
12 3/4"	14"	14 1/4"	14 3/4"	15"	12 3/4"	14"	14 1/4"	14 3/4"	15"
13"	14 1/4"	14 3/4"	15"	15 1/4"	13"	14 1/4"	14 3/4"	15"	15 1/4"
13 1/4"	14 3/4"	15"	15 1/4"	15 3/4"	13 1/4"	14 3/4"	15"	15 1/4"	15 3/4"
13 3/4"	15"	15 1/4"	15 3/4"	16"	13 3/4"	15"	15 1/4"	15 3/4"	16"
14"	15 1/4"	15 3/4"	16"	16 1/4"	14"	15 1/4"	15 3/4"	16"	16 1/4"
14 1/4"	15 3/4"	16"	16 1/4"	16 3/4"	14 1/4"	15 3/4"	16"	16 1/4"	16 3/4"
14 3/4"	16"	16 1/4"	16 3/4"	17"	14 3/4"	16"	16 1/4"	16 3/4"	17"
15"	16 1/4"	16 3/4"	17"	17 1/4"	15"	16 1/4"	16 3/4"	17"	17 1/4"
15 1/4"	16 3/4"	17"	17 1/4"	17 3/4"	15 1/4"	16 3/4"	17"	17 1/4"	17 3/4"
15 3/4"	17"	17 1/4"	17 3/4"	18"	15 3/4"	17"	17 1/4"	17 3/4"	18"
16"	17 1/4"	17 3/4"	18"	18 1/4"	16"	17 1/4"	17 3/4"	18"	18 1/4"
16 1/4"	17 3/4"	18"	18 1/4"	18 3/4"	16 1/4"	17 3/4"	18"	18 1/4"	18 3/4"
16 3/4"	18"	18 1/4"	18 3/4"	19"	16 3/4"	18"	18 1/4"	18 3/4"	19"
17"	18 1/4"	18 3/4"	19"	19 1/4"	17"	18 1/4"	18 3/4"	19"	19 1/4"
17 1/4"	18 3/4"	19"	19 1/4"	19 3/4"	17 1/4"	18 3/4"	19"	19 1/4"	19 3/4"
17 3/4"	19"	19 1/4"	19 3/4"	20"	17 3/4"	19"	19 1/4"	19 3/4"	20"
18"	19 1/4"	19 3/4"	20"	20 1/4"	18"	19 1/4"	19 3/4"	20"	20 1/4"
18 1/4"	19 3/4"	20"	20 1/4"	20 3/4"	18 1/4"	19 3/4"	20"	20 1/4"	20 3/4"
18 3/4"	20"	20 1/4"	20 3/4"	21"	18 3/4"	20"	20 1/4"	20 3/4"	21"
19"	20 1/4"	20 3/4"	21"	21 1/4"	19"	20 1/4"	20 3/4"	21"	21 1/4"
19 1/4"	20 3/4"	21"							



SECT. @ A



DETAIL-B

Dwg #16040
Sheet 6

LINE NO.	REV.	DATE	BY	CHKD.	DESCRIPTION	MATERIAL	QUANTITY	WEIGHT	VOLUME	COST	REMARKS	MATERIAL		MATERIAL		MATERIAL		MATERIAL		
												TYPE	SIZE	TYPE	SIZE	TYPE	SIZE	TYPE	SIZE	
1						2ED1														
2						2ED1														
3						2ED2														
4						2ED2														
5						2ED2														
6						2ED2														
7						2ED2														
8						2ED2														
9						2ED2														
10						2ED2														
11						2ED2														
12						2ED2														
13						2ED2														
14						2ED2														
15						2ED2														
16						2ED2														
17						2ED2														
18						2ED2														
19						2ED2														
20						2ED2														
21						2ED2														
22						2ED2														
23						2ED2														
24						2ED2														

ARMORED EDGE
 PROLS47803 SP56-138
 PRESTON STREET BRIDGE
 OVER FERN VALLEY DITCH
 JEFFERSON CO. KENTUCKY
 RUSBY CONSTRUCTION CO.

AMERICAN BRIDGE
 Division of United States Steel

DESIGNED BY: Roonoke
 CHECKED BY: R. B. E. DIVISION
 IN CHARGE OF: Scott

DATE: 10/17/37
 DRAWN BY: R. B. E. DIVISION
 CHECKED BY: R. B. E. DIVISION
 IN CHARGE OF: Scott

PROJECT NO. K0238
 SHEET NO. 2



